

Supporting our vulnerable adolescents at risk of exploitation

Rachel King

Head of Childrens Service-
Specialist Support

Sandra Ashton Jones

Head of Adult Service- Mental
Health



What is exploitation?

- Exploitation is a form of abuse where someone is forced or coerced into doing things for the benefit of others
- Exploitation can take many forms, in a range of situations, and can involve many groups of people.
- **Modern Slavery and Human Trafficking-** having control or ownership over another person and using this power to exploit them. Modern slavery can include human trafficking, enslavement, domestic servitude and forced labour.
- **Sexual Exploitation** - a form of sexual abuse where people are encouraged, manipulated or forced to participate in sexual acts. They may be threatened with violence and may be groomed by offers of affection, money or gifts.
- **Criminal exploitation-** being forced to take part in criminal activities such as transporting or selling illegal items (e.g. drugs) This can involve **county lines** activities (where drug gangs transport drugs to towns and cities along 'deal lines'). Drug trafficking can also be a form of modern slavery and human trafficking if people are forced to travel to take part in the transportation and sale of drugs. Can also include **cuckooing-** where the person's home is being used by others without informed consent, including for illegal purposes

Tackling Violence and Exploitation Strategy

- **Partnership Vision**

- Working together to strengthen the visibility,
- early identification and partnership response to
- prevent violence, reducing the risk of
- exploitation and its associated harms.

- **Outcomes**

- Strengthened knowledge and understanding of professionals to better identify those at risk
- Reduction in young people becoming involved in violence
- Improved integrated support pathways out of violence and exploitation
- Reduced harm to families and increased
- community resilience and awareness
- Improved information flow and use between agencies and communities
- Increased targeted intervention to protect people from violence and exploitation
- Reduce the level of risk and exploitation of young people
- Robust enforcement to tackle Organised Crime Groups
- Strengthened and supportive offender management

Partnership response to exploitation

- October 2019 – review undertaken to look at how partners were working together to address all forms of exploitation
- Outcome of review – work required across the whole system to improve identification, strengthen pathways of support, increase early intervention work and improve the co-ordination of the partnership response to exploitation
- Key developments – new exploitation screening tool, comprehensive training package for all professionals, join up between children and adult services, early intervention offer of support for low risk young people
- February 2021 – Partnership Exploitation and Missing Hub went live

Overview of Partnership Hub

- The hub brings together professionals from services that have contact with children and adults who are at risk of or are being exploited
- It facilitates the consistent and systematic sharing of relevant and appropriate information so that there is a comprehensive understanding of risk, threat and harm from all forms of exploitation and informs a balanced risk assessment and in turn appropriate interventions and disruption planning.
- Representation in hub includes: Children's Services including (Exploitation Hub Manager; Partnership Strategic Exploitation Co-ordinator; Missing Returns Officer; Early Intervention; Youth Offending Team; Education Inclusion Service; Partnership Exploitation Information Analyst); Adult Social Care; Police including Locate and Public Protection Unit.
- Stronger links are also being developed with Force CID, Offender Management, Neighbourhood Policing Unit and Health colleagues.
- The Hub covers all age groups – children and adults

Daily Briefings

- A briefing meeting takes place every morning and are chaired by the Exploitation Hub Manager.
- The purpose of the daily briefing is to review all overnight missing episodes, ensure that the Hub is aware of anything significant that may have occurred the day before or overnight; facilitates multi-agency information sharing and gathering; decision-making; disruption planning; and intervention/support required around those children/places whereby the concerns are around exploitation.

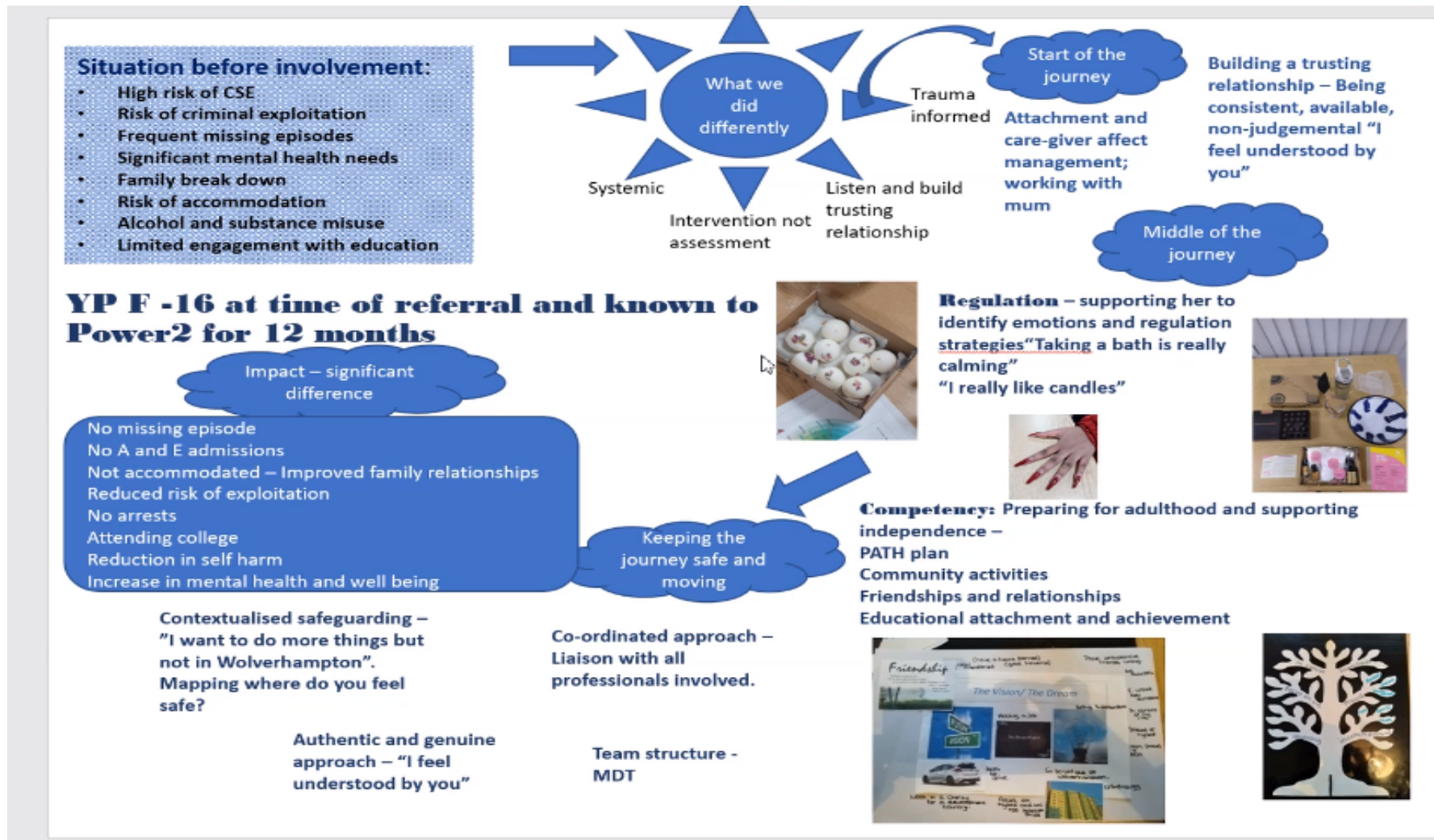
Supporting those at risk of exploitation - Power2 team

- The Power2 team is a multi-disciplinary, multi-agency partnership between Children's Social Care, Adult Social Care, Wolverhampton Clinical Commissioning Group, Public Health and the Voluntary Sector.
- It supports vulnerable young people aged 11-25 at risk of exploitation and family breakdown.
- The service provides a trauma informed approach enabling vulnerable young people and adults to develop a consistent, non-judgemental, one to one relationship with a case/key worker with the relationship being built on trust and stability

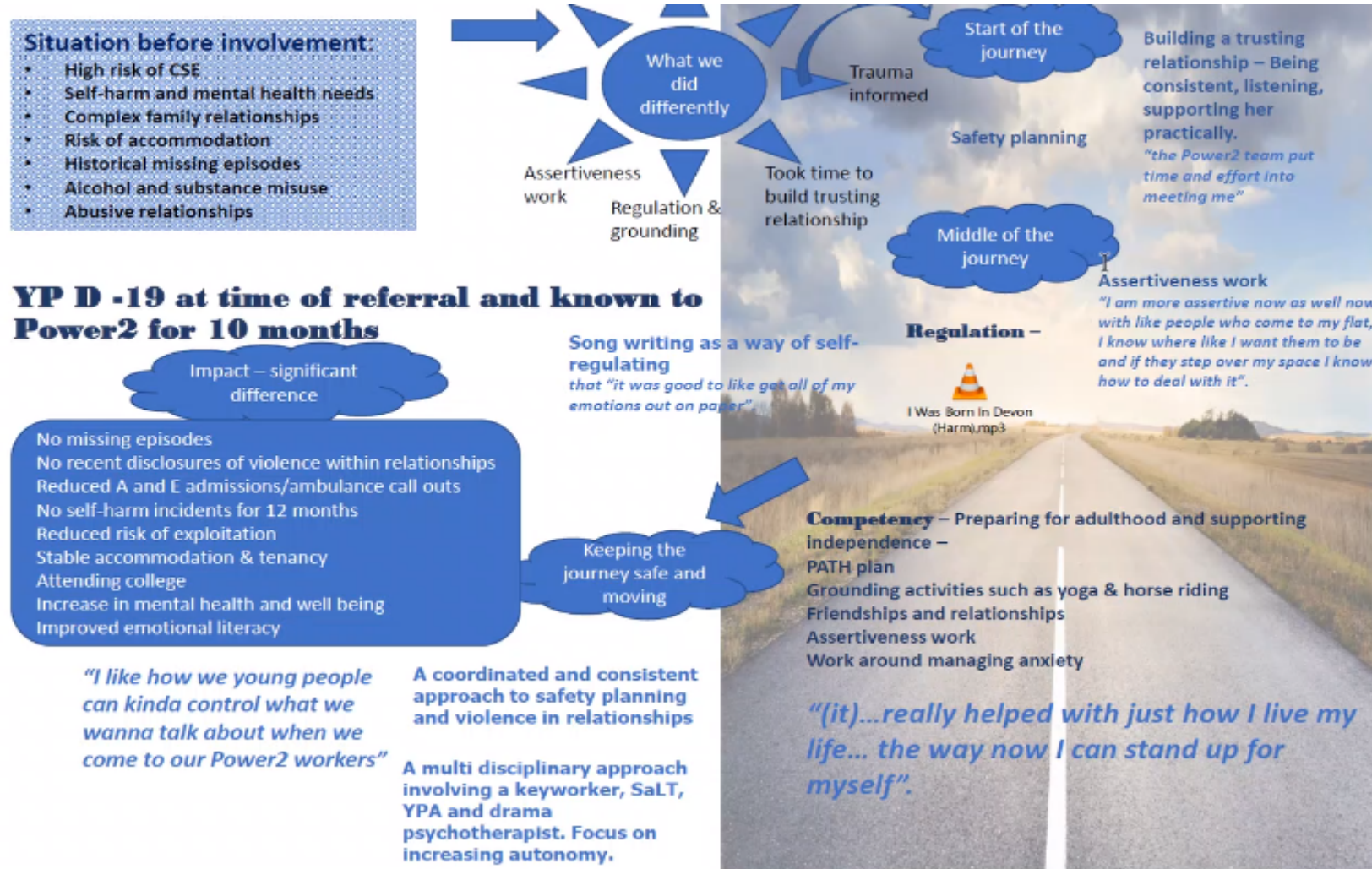
Impact and Benefits of the Hub and Power2

- Multi- agency working across children , young people and adult services, including transitional safeguarding
- Increase in the number of exploitation screening tools being completed by professionals. This indicates increased awareness and earlier identification
- Number of young people requiring a Multi-Agency Child Exploitation (MACE) meeting to co-ordinate a support plan has increased – this is due to better sharing of information and intelligence
- A shared commitment across the partnership to tackling exploitation across the city
- Improved outcome for young people and adults e.g. reduction in missing episodes, reduction in exploitation risk, re-engagement in education employment and training

Story of difference – 16 year old young person



Story of difference- 19 year old young adult



Story of Difference- 63 year old adult

- 63 year old retired male
- Drug dealers and sex workers cuckooed property
- Forced to work for drug dealers to pay drug debts, self harming and suicidal
- Joint work to safeguard via Exploitation Hub incl. Police, Recovery Near You, Wolverhampton Homes and Adult Social Care
- Moved to emergency place of safety following drug raid at property
- NRM completed due to Modern Slavery
- Rehoused permanently out of city in different part of country due to significant risks

Any Questions?

Thank You

